

THE TAY

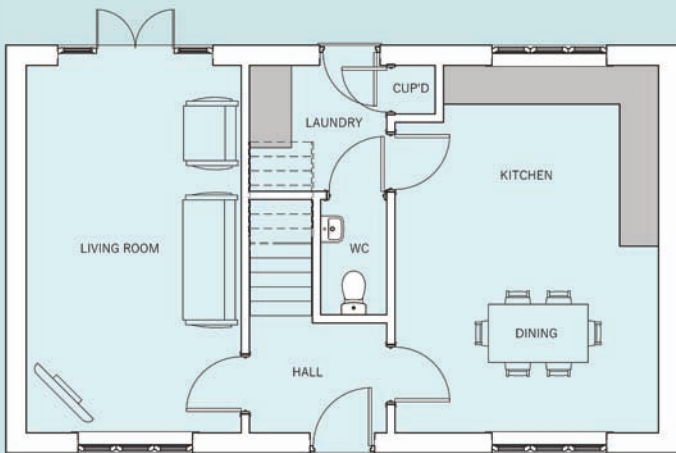


3 Bedroom Detached House

The Tay three bedroom home offers versatile living space ideal for growing families or professional couples in need of a bigger home.

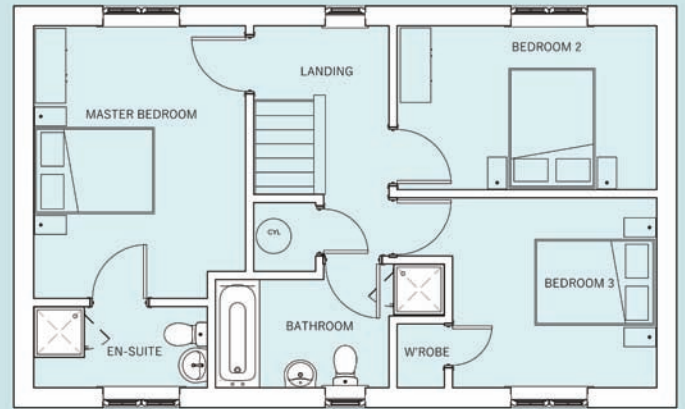
The entrance hallway leads to the dual aspect living room and the kitchen dining area; this generous space is perfect for entertaining. There is also a useful laundry room with built in storage and a guest cloakroom off the kitchen.

Upstairs the landing leads to the en-suite master bedroom along with two further well-proportioned bedrooms. The family bathroom with separate shower completes the first floor.



Ground floor

Kitchen & Dining	4100 x 5700mm 13'5" x 18'8"
Living Room	3350 X 5700mm 11'0" x 18'8"
Laundry Room	2150 x 1975mm 7'0" x 6'5"
Guest Cloakroom	1050 x 1800mm 3'5" x 5'10"



First floor

Master Bedroom	3350 x 4300mm 10'11" x 14'1"
En-Suite	2750 X 1300mm 9'0" x 4'3"
Bathroom	2750 X 1725mm min 9'0" x 5'7"
Bedroom 2	4100 x 2600mm 13'5" x 8'6"
Bedroom 3 (excl wardrobe)	3230 x 3000mm min 10'7" x 9'10"



www.broadgate-homes.com



Salem Place

This image is from an imaginary viewpoint within an open space. Its purpose is to give a feel for the development, not an accurate description of an individual property. It shows a typical Broadgate home of this type, but external materials and landscaping may vary throughout the development and from site to site. Certain windows are subject to plot position on site. Properties may also be built handed (mirror image).

The floor plans depict a typical layout of this housetype. All dimensions are + or - 50mm and floor plans are not shown to scale. For exact plot specification, details of external and internal finishes, dimensions and floor plan differences always consult your Sales Negotiator. SP22/1202/TA