

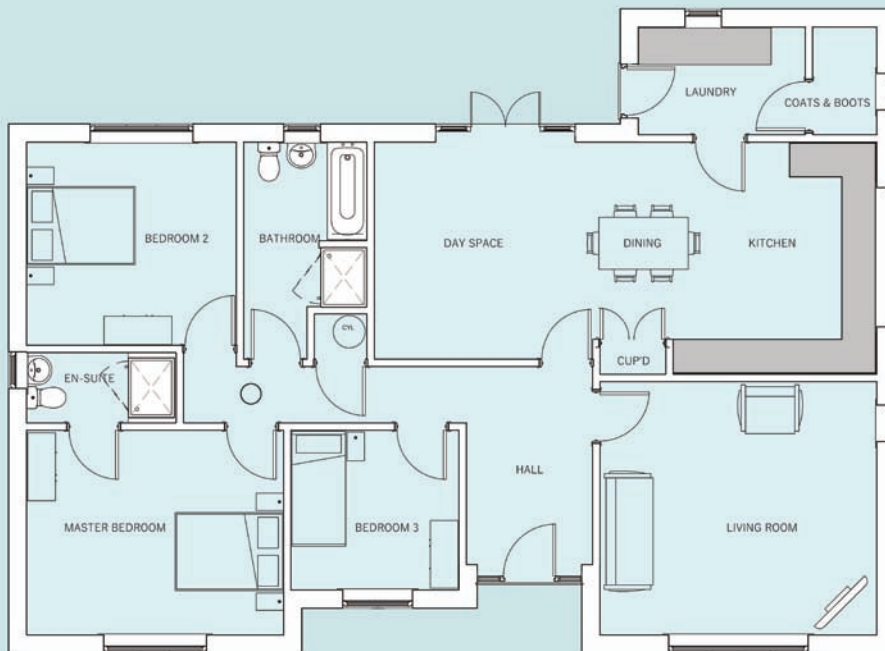
# BLAIRGOWRIE



## 3 Bedroom Detached Bungalow

If a flexible, spacious home for those wanting to live on one level is what you are looking for, then the Blairgowrie is the 3 bedroom detached bungalow for you.

Accommodation includes, Living Room, Spacious Dining Kitchen with walk in cupboard and Day Space overlooking the rear garden and Laundry Room with Walk in Cupboard for coats and boots, Master Bedroom with En-Suite, 2 further Bedrooms and Family Bathroom with separate bath and shower pod.



### Ground Floor

Kitchen & Dining & Day Space	8679 x 4020mm max 28'5" x 13'2"
Living Room	4792 x 4400mm 15'8" x 14'5"
Laundry Room	2900 x 1886mm 9'6" x 6'2"
Coats & Boots	1130 x 1886mm 3'8" x 6'2"
Master Bedroom	4450 x 3560mm 14'7" x 11'8"
En-Suite	2600 x 1240mm 8'6" x 4'1"
Bedroom 2	3635 x 3520mm 11'11" x 11'6"
Bedroom 3	2922 x 2783mm 9'7" x 9'1"
Bathroom	2150 x 3760mm max 7'1" x 12'4"



[www.broadgate-homes.com](http://www.broadgate-homes.com)



Salem Place

This image is from an imaginary viewpoint within an open space. Its purpose is to give a feel for the development, not an accurate description of an individual property. It shows a typical Broadgate home of this type, but external materials and landscaping may vary throughout the development and from site to site. Certain windows are subject to plot position on site. Properties may also be built handed (mirror image).

The floor plans depict a typical layout of this housetype. All dimensions are + or - 50mm and floor plans are not shown to scale. For exact plot specification, details of external and internal finishes, dimensions and floor plan differences always consult your Sales Negotiator. SP22/1376/BL