

5 Bedroom Detached House

The Lomond is a 5 bedroom detached house, showcasing how the tradition and modern approach combine to make a welcoming home.

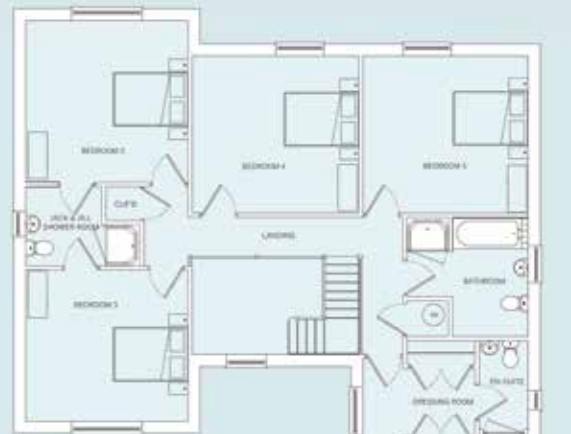
The spacious accommodation includes a living room, family room, impressive dining kitchen with bi-fold doors into the rear garden and a laundry room with coats and boot room, cloakroom and access into the integral double garage.

The first floor impresses with its five bedrooms, with the master bedroom suite having en-suite and dressing room, with French doors opening out onto a Juliette balcony, whilst bedrooms two and three share the luxury of a Jack and Jill shower room and the family bathroom includes a further separate shower pod.



Ground floor

Kitchen & Dining & Living	8450 x 7050mm max 27'8" x 23'1"
Laundry Room	1800 x 2900mm min 5'10" x 9'6"
Coats & Boots	910 x 1800mm 2'11" x 5'11"
Family Room	4076 x 3800mm 13'4" x 12'5"
Living Room	4076 x 6168mm 13'4" x 20'2"
Guest Cloakroom	1240 x 1800mm 4'0" x 5'11"
Garage	5130 x 5730mm 16'9" x 18'9"



First floor

Master Bedroom	5230 x 5730mm 17'2" x 18'9"
En-Suite	1240 x 3100mm 4'0" x 10'2"
Dressing Room	2810 x 3100mm 9'2" x 10'2"
Bedroom 2	4076 x 4068mm 13'4" x 13'4"
Bedroom 3	4076 x 3800mm 13'4" x 12'5"
Jack & Jill Shower Room	2876 x 2100mm 9'5" x 6'10"
Bedroom 4	4200 x 3950mm 13'9" x 12'11"
Bedroom 5	4150 x 3950mm 13'7" x 12'11"
Bathroom	3050 x 3000mm max 10'0" x 9'10"