

# THE HORTON

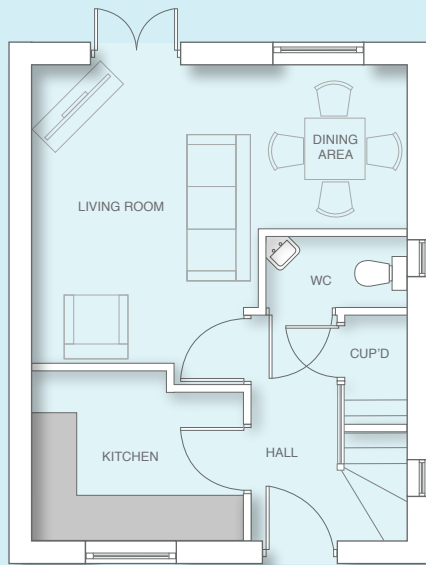


## 2 Bedroom Terrace House

The Horton is a 2 bedroom property perfectly suited to those just stepping on to the housing ladder.

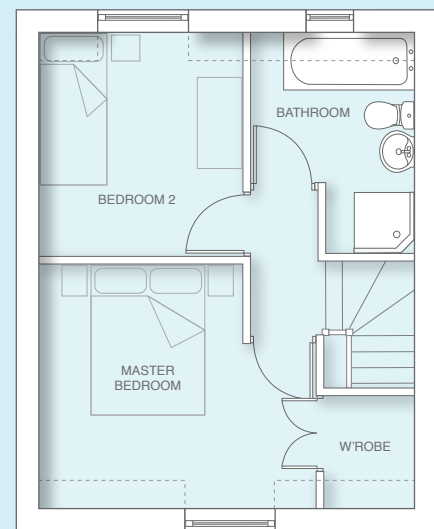
The entrance hallway leads to the kitchen and the light and airy living & dining room with french doors leading out to the private garden. There is also a handy under stair storage cupboard and guest cloakroom to the ground floor.

The landing leads to the master bedroom with useful fitted storage and a second bedroom ideal as a guest room or for use as a study. The family bathroom has a bath and separate shower cubicle.



### Ground Floor

Living & Dining	5010 x 3985 mm max
	16' 5" x 13' 1"
Kitchen	2830 x 2260 mm max
	9' 3" x 7' 4"
Guest Cloakroom	2080 x 950
	6' 10" x 3' 1"



### First Floor

Master Bedroom	3700 x 3255 mm max (excl. wardrobe)
	12' 1" x 10' 7"
Bedroom 2	2725 x 2990 mm
	8' 11" x 9' 9"
Bathroom	2185 x 2950 mm max
	7' 2" x 9' 8"



[www.broadgatehomes.com](http://www.broadgatehomes.com)

This image is from an imaginary viewpoint within an open space area. Its purpose is to give a feel for the development, not an accurate description of an individual property. It shows a typical Broadgate home of this type, but external materials and landscaping may vary throughout the development and from site to site. Certain windows are subject to plot position on site. Properties may also be built handed (mirror image).

The floor plans depict a typical layout of this housetype. All dimensions are + or - 50mm and floor plans are not shown to scale. For exact plot specification, details of external and internal finishes, dimensions and floor plan differences always consult your Sales Negotiator. CF17/684/CI