

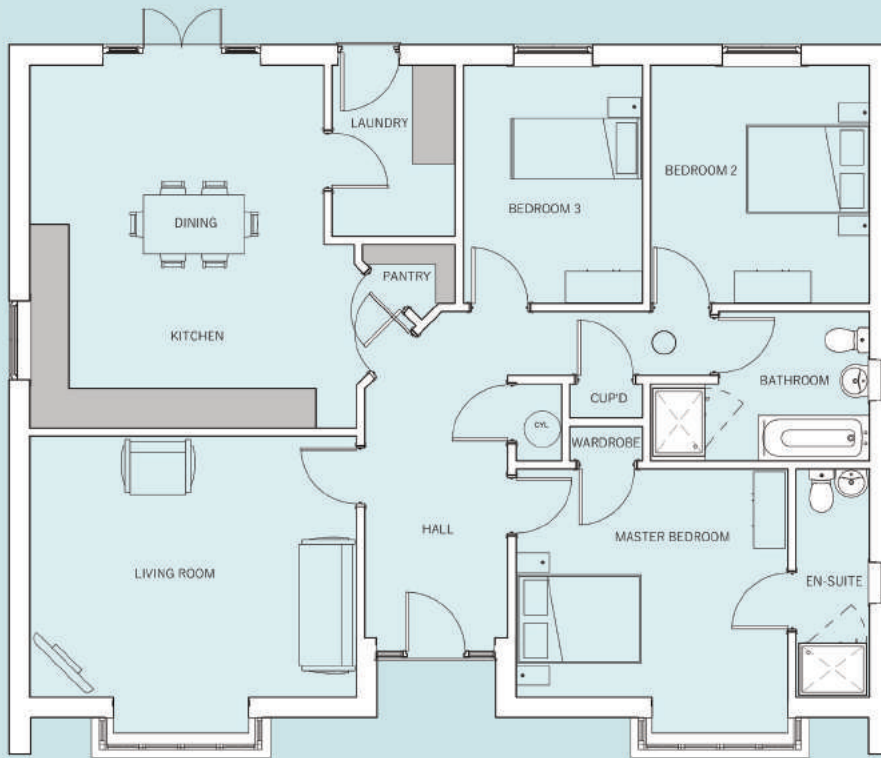
LUNCARTY



3 Bedroom Detached Bungalow

The Luncarty is a generous sized bungalow with bay windows to the front giving this home a “traditional feel”. The Luncarty has been designed to suit the needs of those that want a flexible approach to living on one level, combined with spacious rooms and added storage.

Accommodation includes Hallway with Walk in Cupboard, Living Room, Dining Kitchen with Pantry and Laundry Room, Master Bedroom with En-Suite, 2 further Bedrooms and Family Bathroom with separate bath and shower pod.



Ground Floor

Kitchen & Dining	5000 x 5550mm max 16'4" x 18'2"
Living Room	5000 x 4000mm (excl bay) 16'4" x 13'1"
Laundry Room	1900 x 2630mm 6'2" x 8'7"
Master Bedroom	4160 x 3500mm (excl bay) 13'7" x 11'5"
En-Suite	1140 x 3500mm 3'8" x 11'5"
Bedroom 2	3350 x 3650mm 10'11" x 11'11"
Bedroom 3	2750 x 3650mm 9'0" x 11'11"
Bathroom	3350 x 2300mm max 10'11" x 7'6"



www.broadgate-homes.com



This image is from an imaginary viewpoint within an open space area. Its purpose is to give a feel for the development, not an accurate description of an individual property. It shows a typical Broadgate home of this type, but external materials and landscaping may vary throughout the development and from site to site. Certain windows are subject to plot position on site. Properties may also be built handed (mirror image).

The floor plans depict a typical layout of this house type. All dimensions are + or - 50mm and floor plans are not shown to scale. For exact plot specification, details of external and internal finishes, dimensions and floor plan differences always consult your Sales Negotiator. CW21/1330/29