

THE TAY

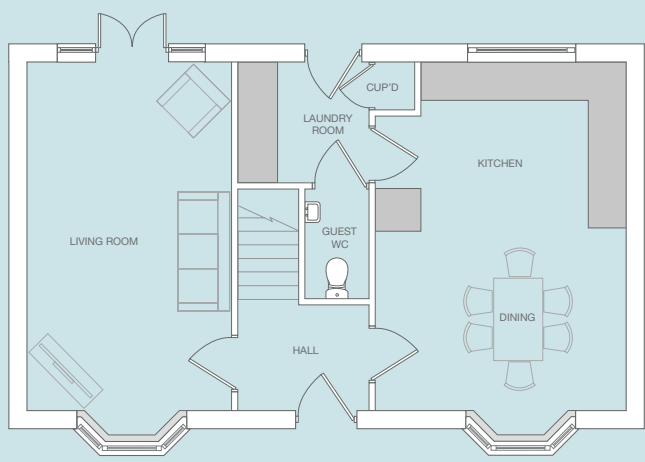


3 Bedroom Detached House

The Tay three bedroom home offers versatile living space ideal for growing families or professional couples in need of a bigger home.

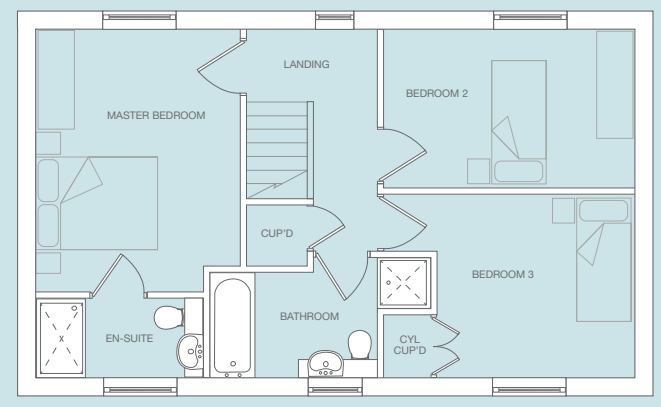
The entrance hallway leads to the dual aspect living room and the kitchen dining area; this generous space is perfect for entertaining. There is also a useful laundry room with built in storage and a guest cloakroom off the kitchen.

Upstairs the landing leads to the en-suite master bedroom along with two further well-proportioned bedrooms. The family bathroom with separate shower completes the first floor.



Ground Floor

Living Room	3325 x 5700 mm
	10' 9" x 18' 8"
Kitchen Dining	4075 x 5700 mm
	13' 3" x 18' 8"
Laundry	2150 x 1975 mm
	7' 0" x 6' 5"
Guest Cloakroom	1050 x 1800 mm
	3' 5" x 5' 10"



First Floor

Master Bedroom	3325 x 4270 mm
	10' 9" x 14' 0"
En-Suite	2725 x 1330 mm
	8' 11" x 4' 3"
Bedroom 2	4075 x 2600 mm
	13' 3" x 8' 6"
Bedroom 3	2975 x 3000 mm
	9' 7" x 9' 10"
Bathroom	2750 x 1725 mm
	9' 0" x 5' 7"



www.broadgatehomes.com

This image is from an imaginary viewpoint within an open space area. Its purpose is to give a feel for the development, not an accurate description of an individual property. It shows a typical Broadgate home of this type, but external materials and landscaping may vary throughout the development and from site to site. Certain windows are subject to plot position on site. Properties may also be built handed (mirror image).

The floor plans depict a typical layout of this housetype. All dimensions are + or - 50mm and floor plans are not shown to scale. For exact plot specification, details of external and internal finishes, dimensions and floor plan differences always consult your Sales Negotiator.



WS24/1211/TA