

THE KINFAUNS

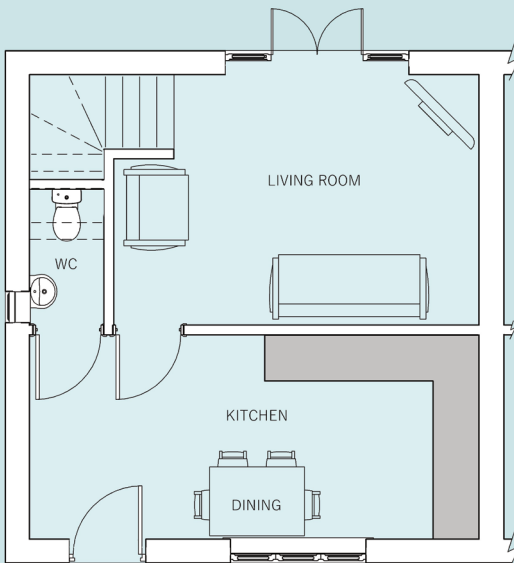


2 Bedroom Terrace House

The 2 bedroom Kinfauns is designed to cater for the tastes and needs of those looking for space and quality in a new home, having the style of a cottage but with a modern look.

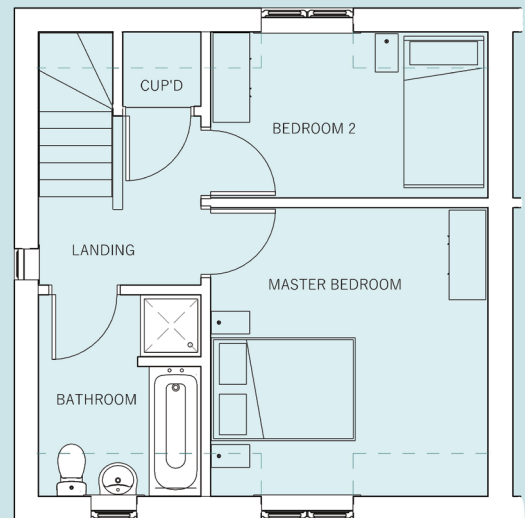
The generous accommodation includes the dining kitchen with ground floor cloakroom leading off, whilst the bright and airy living room has French doors that lead into the rear garden.

The first floor has two well proportioned bedrooms along with the family bathroom, providing both bath and separate shower pod.



Ground floor

Living Room	4800 X 3300mm max 15'8" x 10'9"
Kitchen & Dining	5900 X 2700mm 19'4" x 8'10"
Guest Cloakroom	1000 x 1800mm 3'3" x 5'10"



First Floor

Master Bedroom	3650 X 3800mm 11'11" x 12'5"
Bedroom 2	3650 X 2200mm 11'11" x 7'2"
Bathroom	2150 x 2665mm 7'0" x 8'8"



www.broadgate-homes.com



This image is from an imaginary viewpoint within an open space area. Its purpose is to give a feel for the development, not an accurate description of an individual property. It shows a typical Broadgate home of this type, but external materials and landscaping may vary throughout the development and from site to site. Certain windows are subject to plot position on site. Properties may also be built handed (mirror image).

The floor plans depict a typical layout of this housetype. All dimensions are + or - 50mm and floor plans are not shown to scale. For exact plot specification, details of external and internal finishes, dimensions and floor plan differences always consult your Sales Negotiator.

SJC23/774/2