

THE INSHERRIT

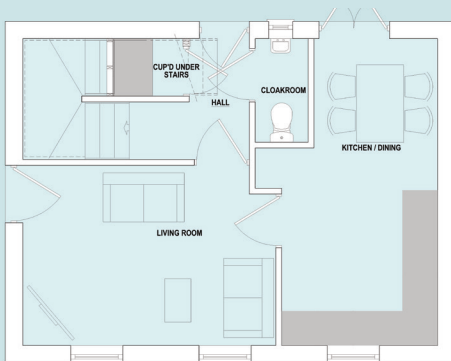


3 Bedroom Semi Detached Town House

The Insherrit is a three storey town house that provides stylish living with space and a flexible approach to suit the requirements of today's modern family.

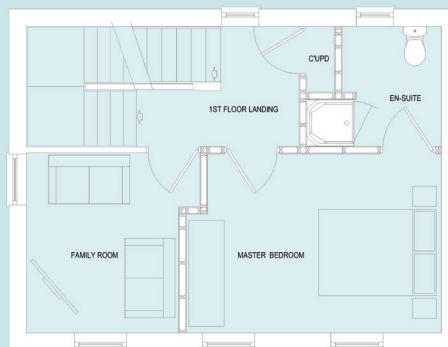
The ground floor is home to the dining kitchen whilst the separate living room has French doors leading into the rear garden. Stairs to the first floor lead to the family room that allows for added flexibility, along with the Master bedroom and En-suite.

The second floor completes the home by having two further bedrooms and the family bathroom that includes both panelled bath and separate shower.



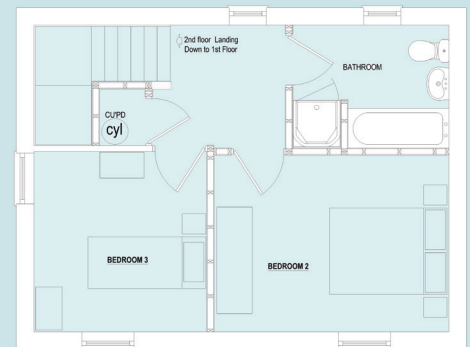
Ground Floor

Kitchen/Dining	3100 _{max} x 5332mm
	10' 2" x 17' 6"
Living Room	4300 x 3132 mm
	14' 2" x 10' 4"
Guest Cloakroom	900 x 1800 mm
	3' 0" x 5' 11"



First Floor

Family Room	2962 _{max} x 3132mm
	9' 9" x 10' 4"
Master Bedroom	4350 _{max} x 3132 mm
	14' 4" x 10' 4"
Ensuite	1700 x 2100 mm
	5' 7" x 6' 11"



Second Floor

Bedroom 2	4000 x 3082mm
	13' 2" x 10' 2"
Bedroom 3	2950 _{max} x 3132 mm
	9' 8" x 10' 4"
Bathroom	2665 x 2150 mm
	8' 9" x 7' 0"



www.broadgate-homes.com



This image is from an imaginary viewpoint within an open space area. Its purpose is to give a feel for the development, not an accurate description of an individual property. It shows a typical Broadgate home of this type, but external materials and landscaping may vary throughout the development and from site to site. Certain windows are subject to plot position on site. Properties may also be built handed (mirror image).

The floor plans depict a typical layout of this house type. All dimensions are + or - 50mm and floor plans are not shown to scale. For exact plot specification, details of external and internal finishes, dimensions and floor plan differences always consult your Sales Negotiator. SJ24/1042/IN