

# THE GLENFARG

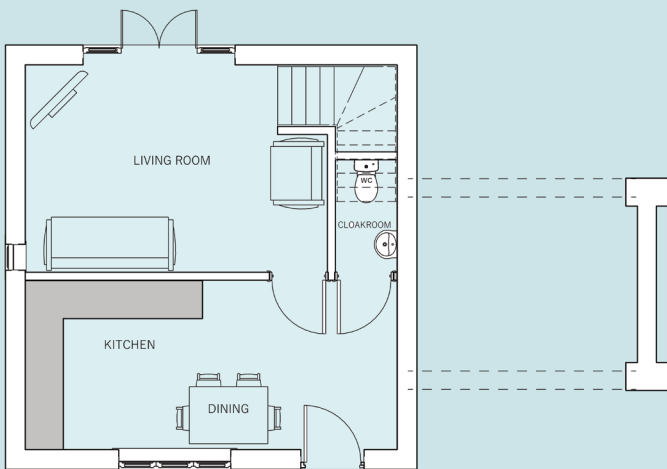


## 3 Bedroom Semi Detached House

The Glenfarg is a 3 bedroom semi detached house, with the benefit of carport beneath the generous sized property, stylishly designed to appeal to young couples and those with families looking to move their way up the housing ladder.

The property leads into the bright and airy dining kitchen, before leading into the sitting room to the rear of the property, having French doors out into the rear garden.

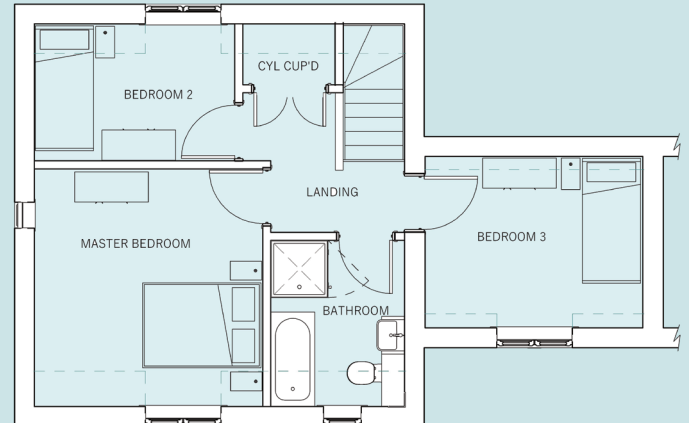
The first floor houses the 3 bedrooms and family bathroom.



### Ground Floor

Kitchen & Dining	5885 x 2700 mm 19' 3" x 8' 10"
Living Room	4785 x 3300 mm max 15' 7" x 10' 9"
Guest Cloakroom	1000 x 1800 mm 3' 3" x 5' 10"

Note: Some have side windows some do not.



### First Floor

Master Bedroom	3635 x 3800 mm 11' 10" x 12' 5"
Bedroom 2	3185 x 2200 mm 10' 5" x 7' 2"
Bedroom 3	3460 x 2750 mm 11' 4" x 9' 0"
Bathroom	2150 x 2665 mm 7' 0" x 8' 9"

Note: Some have side windows some do not.



[www.broadgatehomes.com](http://www.broadgatehomes.com)

This image is from an imaginary viewpoint within an open space area. Its purpose is to give a feel for the development, not an accurate description of an individual property. It shows a typical Broadgate home of this type, but external materials and landscaping may vary throughout the development and from site to site. Certain windows are subject to plot position on site. Properties may also be built handed (mirror image).

The floor plans depict a typical layout of this housetype. All dimensions are + or - 50mm and floor plans are not shown to scale. For exact plot specification, details of external and internal finishes, dimensions and floor plan differences always consult your Sales Negotiator.

WS24/916/6a

