

THE ELCHO

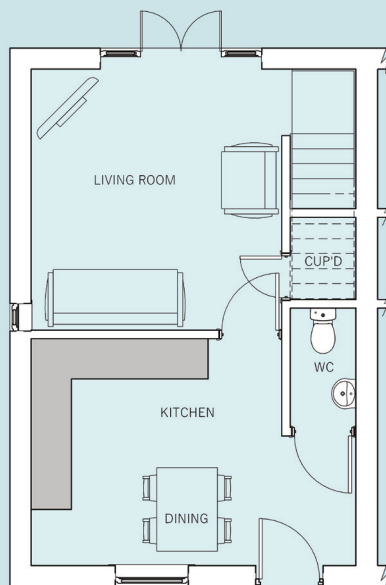


2 Bedroom Terrace House

The Elcho is a 2 bedroom home perfectly suited to those just stepping on to the housing ladder.

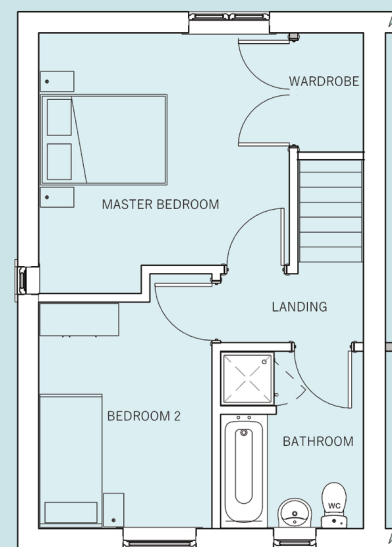
The front door opens into the breakfast kitchen which in turn leads through to the light and airy living room with french doors out to the private garden. There is also a handy under stair storage cupboard and guest cloakroom to the ground floor.

The landing flows through to the master bedroom with useful fitted storage and a second bedroom ideal as a guest room or for use as a study. The family bathroom has a bath and separate shower cubicle.



Ground floor

Kitchen & Dining	4850 x 3395 max 15'10" x 11'1"
Living Room	3750 x 3905mm 12'3" x 12'9"
Guest Cloakroom	1000 x 1800mm 3'3" x 5'10"



First floor

Master Bedroom	3750 x 3905 mm (exc wardrobe) 12'3" x 12'9"
Bedroom 2	2600 x 3395mm 8'6" x 11'1"
Bathroom	2150 x 2665mm 7'0" x 8'8"



www.broadgate-homes.com



This image is from an imaginary viewpoint within an open space area. Its purpose is to give a feel for the development, not an accurate description of an individual property. It shows a typical Broadgate home of this type, but external materials and landscaping may vary throughout the development and from site to site. Certain windows are subject to plot position on site. Properties may also be built handed (mirror image).

The floor plans depict a typical layout of this housetype. All dimensions are + or - 50mm and floor plans are not shown to scale. For exact plot specification, details of external and internal finishes, dimensions and floor plan differences always consult your Sales Negotiator. SJC22/772/1