

AMULREE

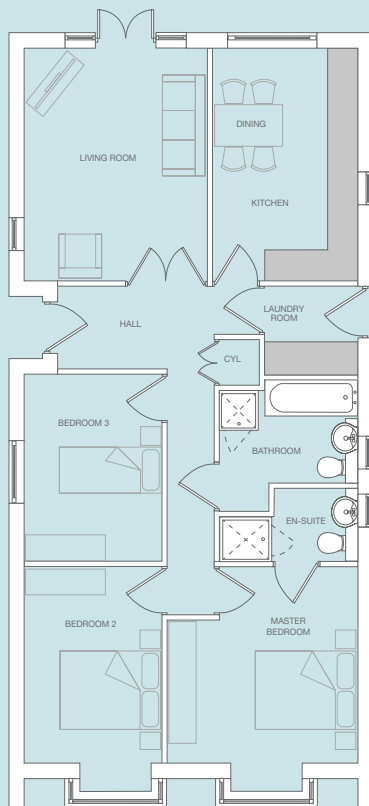


3 Bedroom Detached Bungalow

The Amulree is a three bedroom bungalow offering spacious living, making it an ideal choice for those looking for the flexibility that comes with living on one level.

The front door opens into the entrance hallway with double doors leading into the living room having dual aspect views, and French doors that lead into the rear garden. The dining kitchen boasts an airy feel with its modern units and dual aspect views whilst the laundry room gives access to the rear door into the garden.

Follow down the hallway to the master bedroom with its bay window and En-suite, along with two further generous sized bedrooms and family bathroom that includes bath and separate shower cubicle.



Ground Floor

Kitchen Dining	2860 x 4500 mm
	9' 4" x 14' 7"
Living Room	3610 x 4500 mm
	11' 8" x 14' 7"
Laundry Room	1785 x 1720 mm
	5' 8" x 5' 6"
Master Bedroom	3755 x 3800 mm max
	12' 3" x 12' 4"
En-Suite	2725 x 1350 mm max
	3' 11" x 4' 4"
Bedroom 2	2715 x 3800 mm
	8' 11" x 12' 4"
Bedroom 3	2715 x 3620 mm
	8' 11" x 11' 8"
Bathroom	2725 x 2750 mm
	8' 11" x 7' 0"



www.broadgatehomes.com

This image is from an imaginary viewpoint within an open space area. Its purpose is to give a feel for the development, not an accurate description of an individual property. It shows a typical Broadgate home of this type, but external materials and landscaping may vary throughout the development and from site to site. Certain windows are subject to plot position on site. Properties may also be built handed (mirror image).

The floor plans depict a typical layout of this housetype. All dimensions are + or - 50mm and floor plans are not shown to scale. For exact plot specification, details of external and internal finishes, dimensions and floor plan differences always consult your Sales Negotiator.

WS24/988/AM



Gleneagles
DRIVE